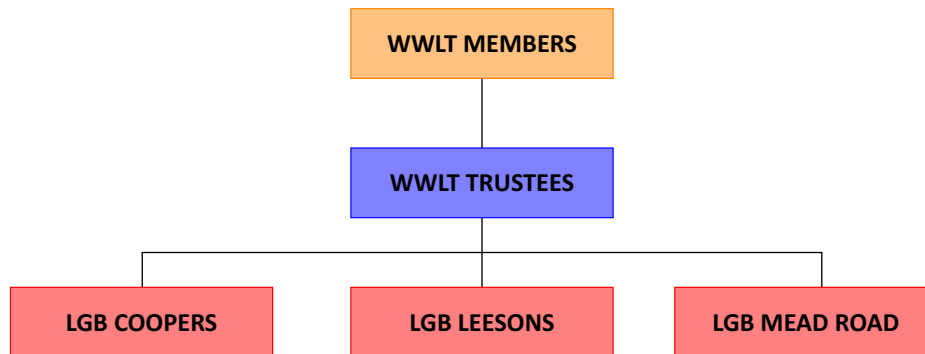


# WILLIAM WILLETT LEARNING TRUST

## GOVERNANCE STRUCTURE



### WWLT MEMBERS

Sam Parrett  
Andrew Downes  
Ray Humby

### KEY RESPONSIBILITIES

Strategic Direction of the Trust  
Approve accounts  
Delegate oversight of Trust to Directors  
Capacity Building  
Trust Performance  
Performance of Directors  
Approve governance structures

### WWLT TRUSTEES

Mr Andrew Downes (NED)	Chair – Policy and Compliance
Vacancy (NED)	Standards
Mr Ray Humby (NED)	Governance and Business
Vacancy (NED)	Lead Finance / Resources
Mrs Claire Singleton (NED)	Lead HR and Legal
Mr John Cliff (NED)	Growth / Safeguarding
Mandy Rush (ED)	Interim EHT Mead Road / HT Leesons
Shirley Puxty (ED)	Interim Strategic Development Officer

### KEY RESPONSIBILITIES

Vision, ethos, recommendations for strategic direction  
Appoint and PM CEO  
Appoint Principals/ Headteachers of Schools with CEO/ EHT (Primary) and LGBs  
Performance Manage Principals/ Headteachers with CEO/ EHT (Primary)  
Approve SoD for each academy  
Set and Approve common Trust Policies  
Set, monitor and report on Standards (KPi) of each Academy  
Monitor and Report on Finances of academies and Trust  
Set, monitor and report on HR/ personnel  
Ensure Governance structures are in place at all levels  
Lead, report and make recommendations on growth  
Challenge and Intervention  
Shared services  
Report to Trustees  
Each Director to lead, monitor and report on a KPi.  
Safeguarding

### SCHOOL GOVERNING BODIES

LGB Leesons School  
LGB Coopers School  
LGB Mead Road School  
LGB School 4  
LGB School 5

### KEY RESPONSIBILITIES

Vision, ethos, recommendations for strategic direction  
Appoint and PM CEO  
Appoint Principals/ Headteachers of Schools with CEO/ EHT (Primary) and LGBs  
Performance Manage Principals/ Headteachers with CEO/ EHT (Primary)  
Approve SoD for each academy  
Set and Approve common Trust Policies  
Set, monitor and report on Standards (KPi) of each Academy  
Monitor and Report on Finances of academies and Trust  
Set, monitor and report on HR/ personnel  
Ensure Governance structures are in place at all levels  
Lead, report and make recommendations on growth  
Challenge and Intervention  
Shared services  
Report to Trustees  
Each Director to lead, monitor and report on a KPi.  
Safeguarding